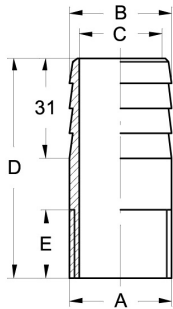
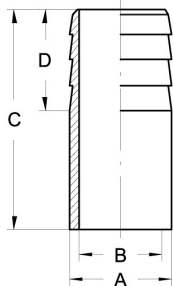
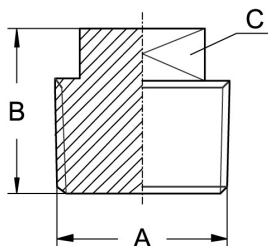


**Gewindefittings DIN EN 10241**
**Art.Nr.**
**EUR**
**Art.Nr.**
**EUR**
**Gewindeschlauchnippel, R**


DN	A	B	C	D	E	Art.Nr.		EUR		AISI316Ti	
8	R 1/4"	13,5	8,9	70	13					543829	13,60
10	R 3/8"	17,2	12,6	70	15					543830	13,90
15	R 1/2"	21,3	16,1	70	15					543831	15,40
20	R 3/4"	26,9	21,7	70	18					543832	17,90
25	R 1"	33,7	27,3	70	21					543833	20,90
32	R 1,25"	42,4	36	70	23					543834	27,90
40	R 1,5"	48,3	41,9	100	23					543835	33,30
50	R 2"	60,3	53,1	100	23					543836	50,80

**Anschweißschlauchnippel**


DN	A	B	C	D	Art.Nr.		EUR		AISI316Ti	
8	13,5	8,9	70	31					541929	9,10
10	17,2	12,6	70	31					541930	9,60
15	21,3	16,1	70	31					541931	10,40
20	26,9	21,7	70	31					541932	12,20
25	33,7	27,3	70	31					541933	13,60
32	42,4	36	70	31					541934	18,10
40	48,3	41,9	100	31					541935	20,30
50	60,3	53,1	100	31					541936	31,40

**Vierkantstopfen, R**


DN	A	B	C	Art.Nr.		EUR		AISI316C-1.4408	
6	R 1/8"	19	SW 6					543928	5,90
8	R 1/4"	20	SW 9					543929	6,60
10	R 3/8"	22	SW 11					543930	6,80
15	R 1/2"	25	SW 13					543931	7,30
20	R 3/4"	27	SW 16					543932	9,20
25	R 1"	32	SW 20					543933	15,40
32	R 1,25"	35	SW 24					543934	25,80
40	R 1,5"	37	SW 25					543935	28,90
50	R 2"	38	SW 32					543936	45,50
65	R 2,5"	48	SW 42					543937	112,20
80	R 3"	52	SW 46					543938	175,10
100	R 4"	62	SW 58					543939	Anfrage

**Ähnlich DIN EN 10241**